

Module 4



USMC Organizational Structure



Goals and Objectives

- **Understand the dual chains of command in the Department of Defense and when each is used**
- **Describe the Total Force Concept**
- **Name the 3 main components of the Marine Corps**
- **Describe the basic war fighting structure of the operating forces**
- **Describe the Marine Corps Reserves mission in relation to the operating forces**



Module 4 Outline

- **Dept of Defense Dual Chains of Command**
 - **Service: Military Dept Secretaries and Service Chiefs**
 - **Operational: President to SecDef to Unified Combatant Commanders**
- **Total Force Concept/Marine Demographics**
- **Marine Corps components**
 - **Operating Forces**
 - **MAGTF structure**
 - **4 elements**
 - **4 types**
 - **2 service-level combatant commands**
 - **Marine Forces Command**
 - **Marine Forces Pacific**
 - **Reserve Forces**
 - **MAGTF structure**
 - **1 command: Marine Forces Reserves**
 - **Supporting Establishment**
 - **HQMC**
 - **Supporting commands**
 - **Bases and stations**



Military Command Structure

National Command Authority





Unified Combatant Commands

THE WORLD 1:60,000,000

THE WORLD WITH COMMANDERS' AREAS OF RESPONSIBILITY

EDITION 8 NGA

SERIES 1107

BASED ON
UNIFIED COMMAND PLAN
17 DECEMBER 2008



SERIES 1107
EDITION 8 NGA



PREPARED AND PUBLISHED BY THE
NATIONAL GEOSPATIAL INTELLIGENCE AGENCY
ST LOUIS, MO
Map information as of 2008

© COPYRIGHT 2008 BY THE UNITED STATES GOVERNMENT
NO COPYRIGHT CLAIMED UNDER TITLE 17 U.S.C.

MAP EFFECTIVE 17 DECEMBER 2008

State of Alaska assigned to USNORTHCOM's
Area of Responsibility. Forces based in Alaska
remain assigned to USNORTHCOM.

USERS SHOULD REFER CORRECTIONS, ADDITIONS, AND COMMENTS TO THE NGA ENTERPRISE SERVICE CENTER: 1-800-455-0899. COMMERCIAL: 301-227-8811. DSN: 287-8811.
UNCLASSIFIED EMAIL: ENTERPRISESERVICECENTER@NGA.MIL. SIPRNET: ESC@NSC.NGA.MIL
OR WRITE TO: DIRECTOR, NATIONAL GEOSPATIAL INTELLIGENCE AGENCY, ATTN: ESC, MAIL STOP D-240, 4000 SANGAMORE ROAD, BETHESDA, MD 20816-5003.

1:60,000,000

MILLER CYLINDRICAL PROJECTION

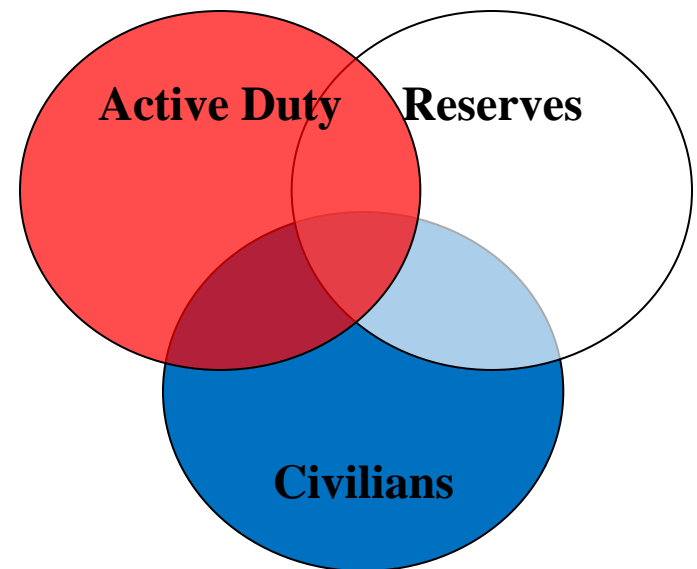
The 1950 Israeli proclamation that
Jerusalem be the national capital is
not recognized by the United States.

* West Bank and Gaza Strip - "Israeli-occupied with current
status subject to the Israeli - Palestinian Interim Agreement -"
permanent status to be determined through further negotiation."

THE REPRESENTATION OF BOUNDARIES
IS NOT NECESSARILY AUTHORITATIVE.

Total Force Concept— One Team, One Fight

- Total Force concept became DoD policy in 1974
- Mission success depends on the effective integration of everyone
 - All branches of service
 - All types of personnel



Breakdown

- 4 Marines to a Fire Team (4)



- 3 Fire Teams to a Squad (12)



- 4 Squads to a Platoon (48)



- 4 Platoons to a Company (192)
- 5 Companies to a Battalion or Squadron (960)
- 5 Battalions or Squadrons to a Regiment, Air Group, or Combat Logistics Group (4800)
- 3 Regiments form a Division, Wing or a Logistics Group (15000)



Marine Divisions

- **1st Marine Division**
Camp Pendleton, CA



- **2nd Marine Division**
Camp Lejeune, NC



- **3rd Marine Division**
Okinawa, Japan



Marine Air Wings

- **1st Marine Air Wing**
Okinawa, Japan



- **2nd Marine Air Wing**
Cherry Point, NC



- **3rd Marine Air Wing**
Miramar, CA



Marine Logistic Groups

- 1st Marine Logistics Group
Camp Pendleton, CA



- 2nd Marine Logistics Group
Camp Lejeune, NC



- 3rd Marine Logistics Group
Okinawa, JA



Marine Expeditionary Force

- 1st Marine Expeditionary Force
- Camp Pendleton, CA
- 1stMarDiv, 1stMLG, 3rdMAW



- 2nd Marine Expeditionary Force
- Camp Lejeune, NC
- 2ndMarDiv, 2ndMLG, 2ndMAW



- 3rd Marine Expeditionary Force
- Okinawa, JA
- 3rdMarDiv, 3rdMLG, 1stMAW



RECAP

- **Who is the Commander in Chief?**
- **How many Fire-Teams in a Marine Rifle Squad?**
- **Where is 3rdMAW located?**
- **Where is 1stMarDiv located?**
- **What year did the Total Force concept became DoD policy**



Operating Forces

- **Marine Air Ground Task Force (MAGTF) structure**
 - **Unique combined-arms structure**
 - Scalable and sustainable to fit the mission
 - Trained and equipped for quick response time
 - **4 elements of all MAGTFs**
 - **Command Combat Element (CE)**
 - **Ground Combat Element (GCE)**
 - **Air Combat Element (ACE)**
 - **Logistics Combat Element (LCE)**





Operating Forces

MAGTF Structure: 4 Types



MEF

**Command
Element**

**MAGTF
Size**



**Marine
Expeditionary Force
(MEF)**

2-3 Star

**20,000-90,000
30-45 day response**

**Marine Division
(MARDIV)**

**Marine
Aircraft Wing
(MAW)**

**Marine
Logistics Group
(MLG)**





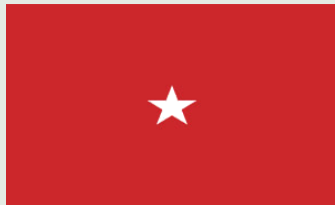
Operating Forces

MAGTF Structure: 4 Types



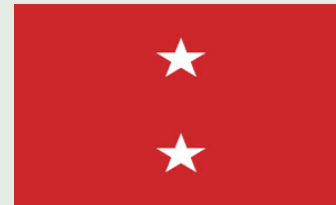
MEB

MAGTF Size



Marine
Expeditionary Brigade
(MEB)

Command Element



1-2 Star

3,000-20,000
5-24 day response

Combat Element

Marine Regiment
(MARREG)

Marine
Aircraft Group
(MAG)

Combat
Logistics Regiment
(CLG)





Operating Forces

MAGTF Structure: 4 Types



MEU

MAGTF Size

**Command
Element**

Combat Element



**Marine
Expeditionary Unit
(MEU)**

Colonel

**1,500–3000
6 hour response**

**Battalion
Landing Team
(BLT)**

**Reinforced
Helicopter/Fixed
Wing Squadron**

**Combat
Logistics Battalion
(CLB)**





Operating Forces

MAGTF Structure: 4 Types

SPMAGTF



MAGTF Size



Special Purpose
MAGTF (SPMAGTF)

Command Element



Varies

Varies

Combat Element

Elements of a MARDIV

Elements of a MAW

Elements of a MLG



Marine Corps Combatant Commands

- Two primary USMC Operating Forces augmented by the USMC Reserve Force
 - U.S. Marine Corps Forces Command (MARFORCOM)
 - U.S. Marine Corps Forces, Pacific (MARFORPAC)
- Used by unified Combatant Commanders as a forward-presence, crisis-response, and operational fighting force



Marine Forces Command MARFORCOM



Marine Forces Pacific MARFORPAC



Marine Forces Reserve

“Ready, Relevant, Responsive”

- Mission = reinforce and augment active duty forces for sustained operations
- Reserves are trained to same rigorous standards
- MARFORRES is structured like a MAGTF: air, ground, logistics



Marine Forces Reserve MARFORRES



RECAP

- What does MAGTF stand for?
- How many types of MAGTF are there?
- What would be the rank of the Marine that would command a MEU?
- What size air combat element would you have in a MEF?



USMC Supporting Establishment

- Supports the operational forces and increases the overall combat readiness of the Marine Corps
- Provide strategic logistics to recruit, train, equip, and provision the force
- Includes the following:
 - HQMC
 - Supporting commands
 - Installations

Civilian Marines are a significant force in the supporting establishment



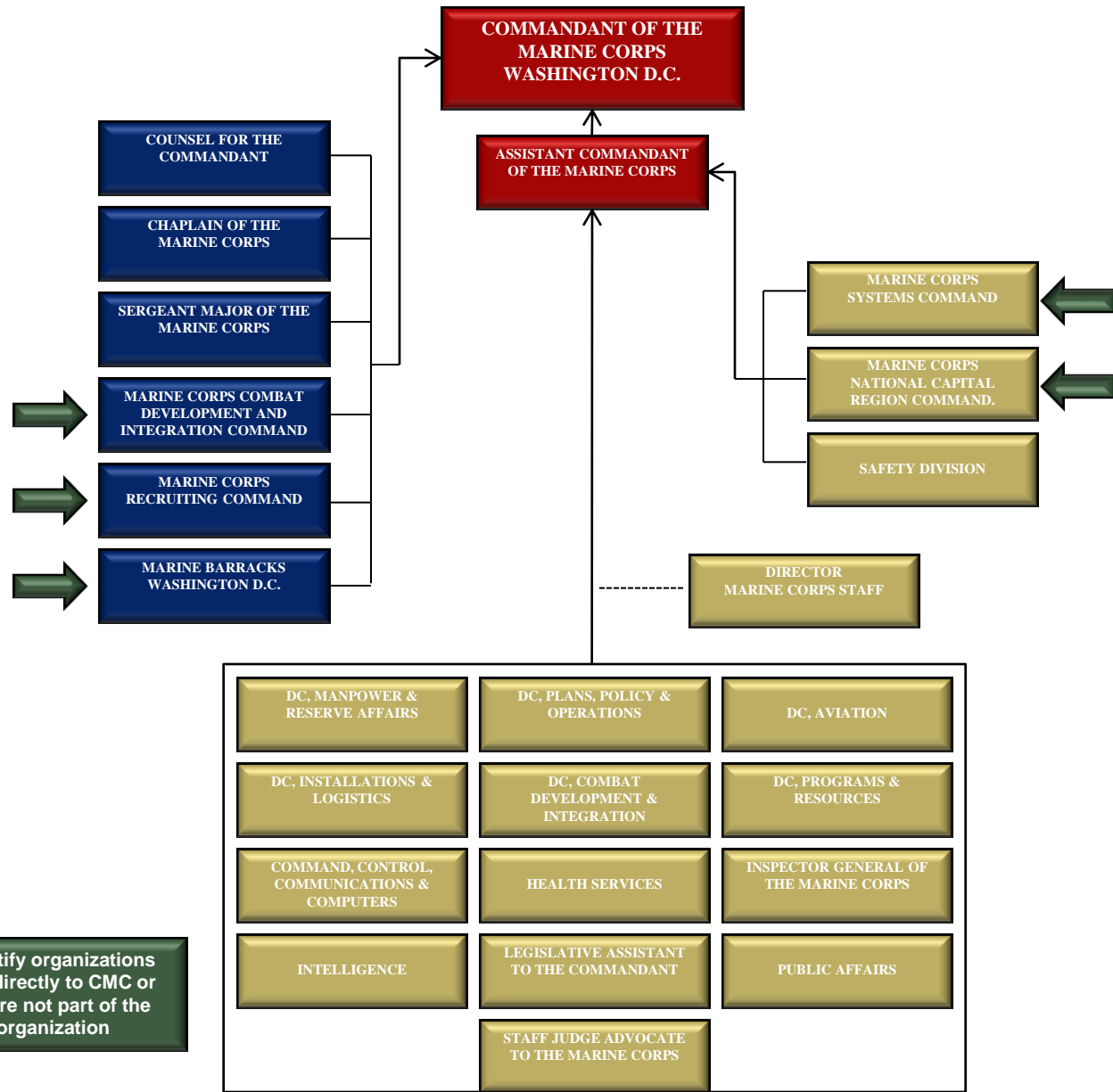
Headquarters and Supporting Commands

Overarching Mission: To support the war fighting capabilities of the Operating Forces

Headquarters, U.S. Marine Corps	Marine Corps Recruiting Command	Marine Corps Combat Development & Integration Command	Marine Corps Logistics Command	Marine Corps Systems Command
Organize, train, and equip the force, to include the administration discipline, internal organization training, requirements, efficiency, and readiness of the service	Recruit the highest quality young American and train them to become United States Marines	Develop fully integrated Marine Corps war fighting capabilities, to include doctrine, organization, training and education, material	Provide worldwide, integrated logistics/supply chain and distribution management, depot level maintenance management, and strategic prepositioning capability	Manage the acquisition and sustainment of systems and equipment used by the Operating Forces



Headquarters Marine Corps



Arrows identify organizations That report directly to CMC or ACMC but are not part of the HQMC organization

Marine Corps Recruiting Command



Commanding General
MCRC
Quantico, VA

Commanding General
Eastern Recruiting Region
Parris Island, SC

Commanding General
Western Recruiting Region
San Diego, CA

1st MCD

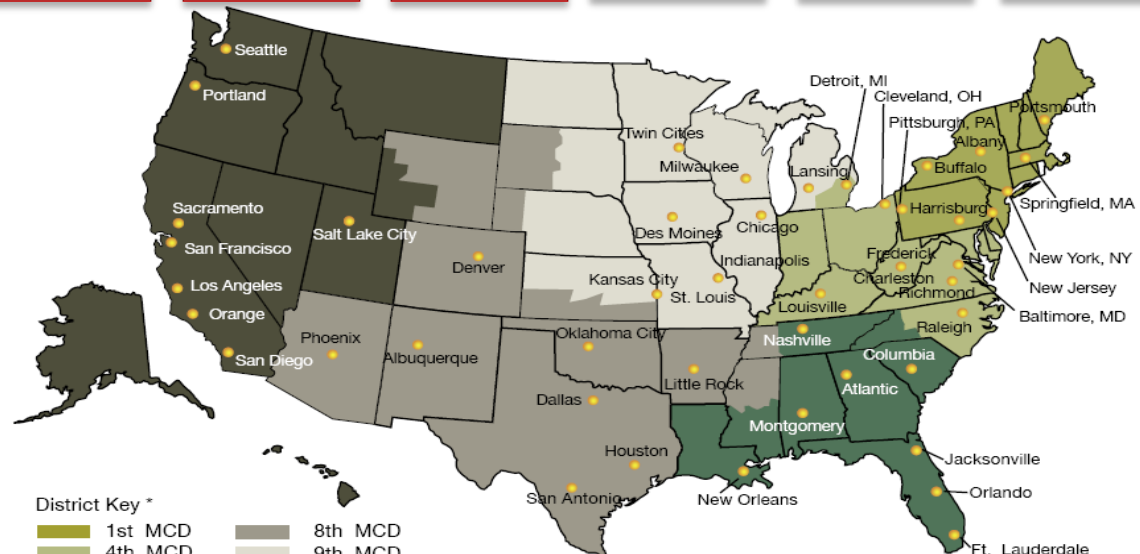
4th MCD

6th MCD

8th MCD

9th MCD

12th MCD



District Key *

- | | |
|--|---|
| 1st MCD | 8th MCD |
| 4th MCD | 9th MCD |
| 6th MCD | 12th MCD |



Deputy Commandant for Combat Development & Integration



**DEPUTY COMMANDANT
COMBAT DEVELOPMENT
& INTEGRATION**



**COMMANDING GENERAL
MARINE CORPS FORCES CYBER**

**COMMANDING GENERAL
MARINE CORPS COMBAT
DEVELOPMENT COMMAND**

**COMMANDING GENERAL
MARINE CORPS FORCES
STRATEGIC COMMAND**

DEPUTY CG

CHIEF OF STAFF

**TECOM
TRAINING &
EDUCATION
COMMAND**

**CDD
CAPABILITIES
DEVELOPMENT
DIRECTORATE**

**MCWL
MARINE CORPS
WAR FIGHTING LAB**

**SID
SEABASING
INTEGRATION
DIVISION**

**OAD
OPERATIONAL
ANALYSES DIVISION**

**G3/5
OPERATIONS/
FACILITIES DIVISION**

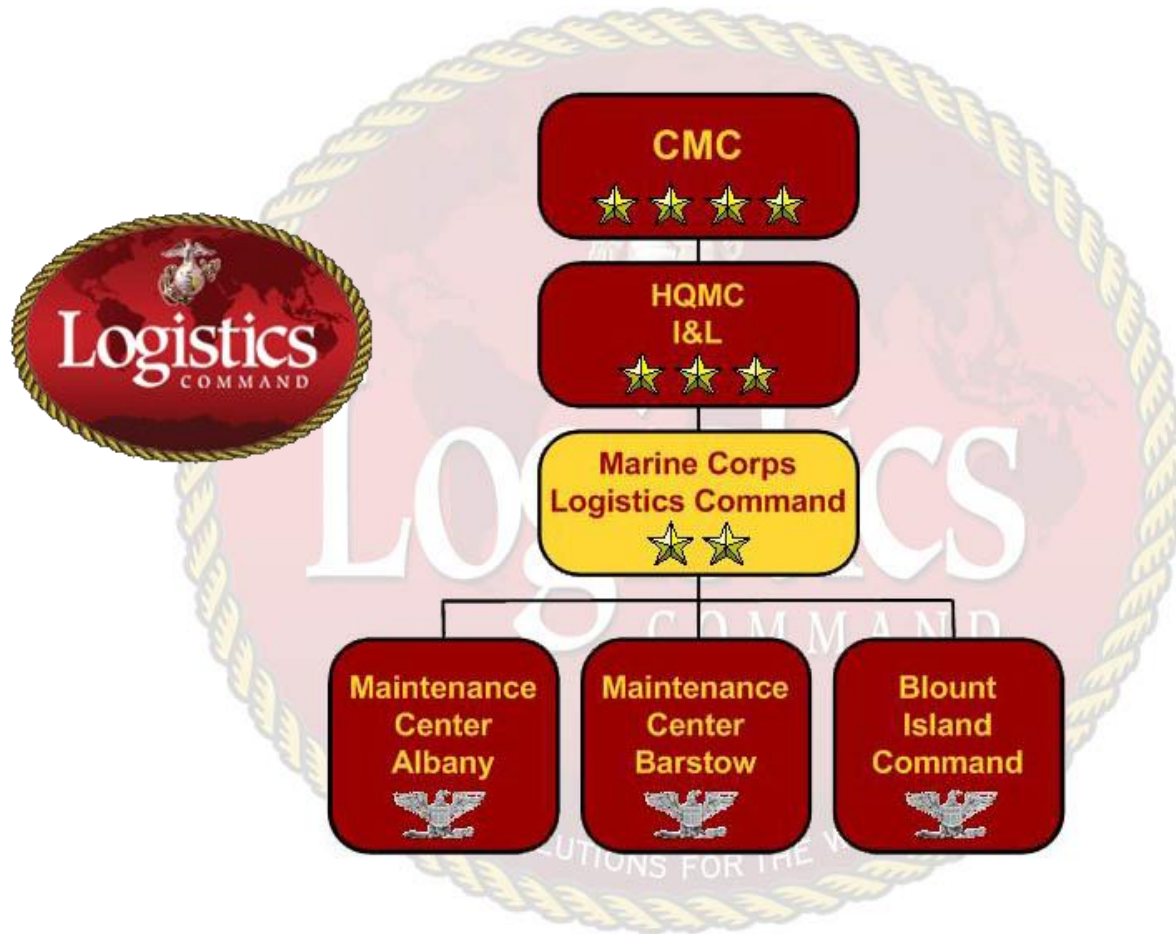
**JCAID
JOINT CAPABILITY
ASSESSMENT AND
INTEGRATION
DIRECTORATE**

**COMPTROLLER
DIVISION**

**SJA
STAFF JUDGE
ADVOCATE**



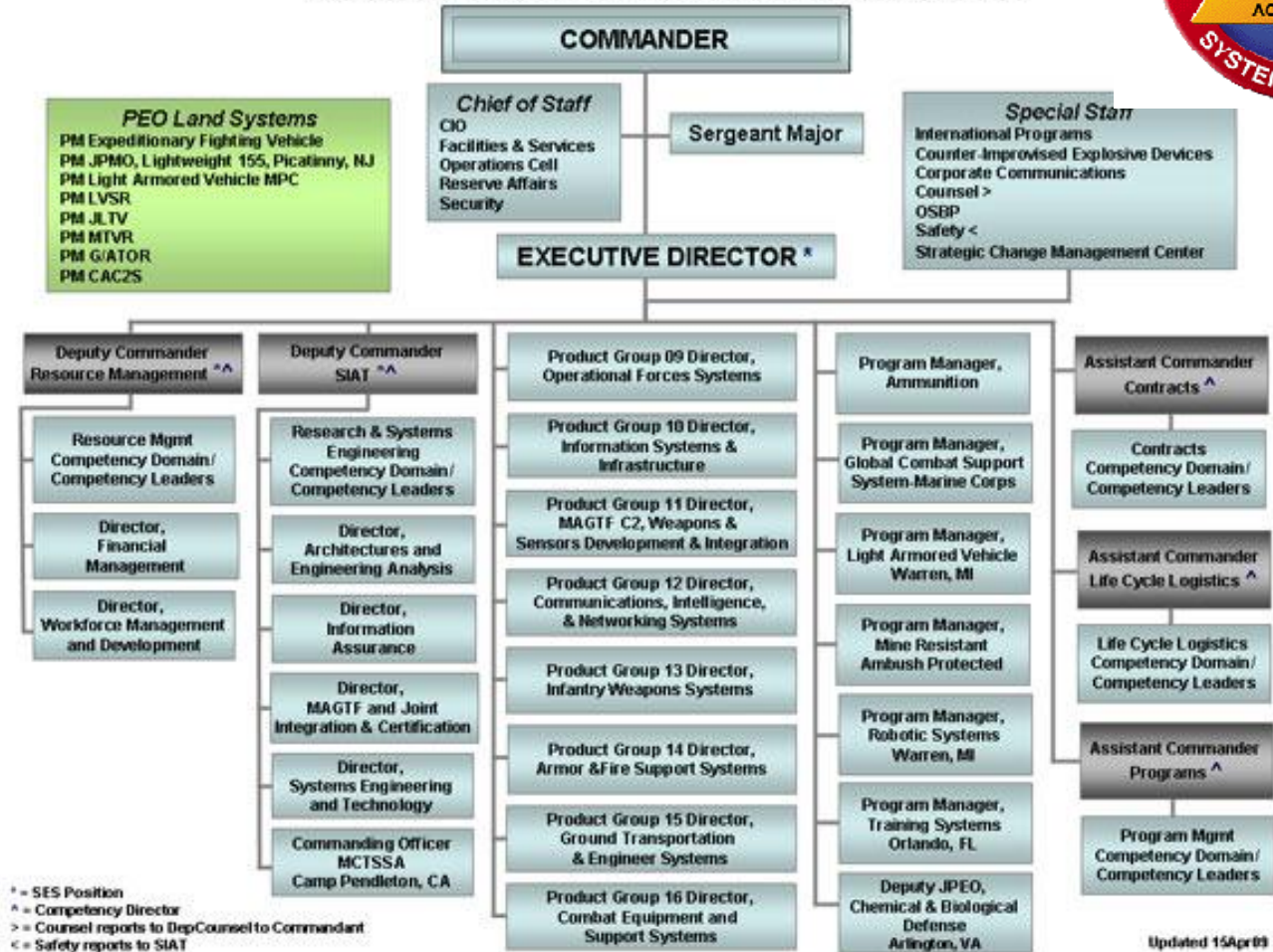
Marine Corps Logistics Command



Marine Corps Systems Command (MCSC)



MARCORSYSCOM ORGANIZATION

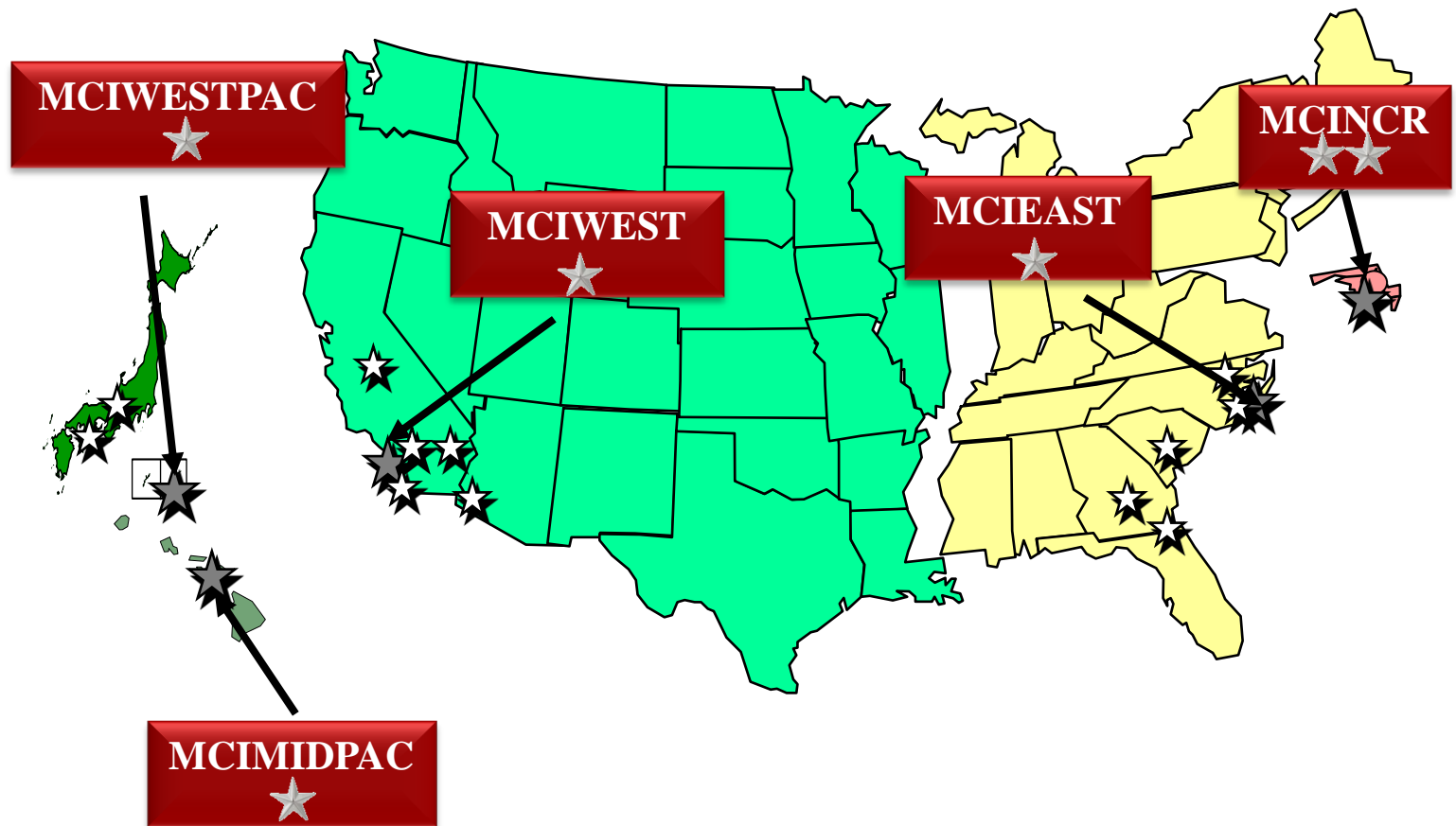


Updated 15Apr09



Marine Corps Installations

- The “5th Element”
- 5 Regional Installation Commands
- 15 bases and stations



Marine Corps Base



BASE COMMANDER



**CHIEF
OF
STAFF**

**BASE
SERGEANT
MAJOR**

G-1
MANPOWER DIVISION

G-3
OPERATIONS DIVISION

G-4
LOGISTICS DIVISION

G-5
INSTALLATIONS AND
ENVIRONMENT
DIVISION

G-6
COMMUNICATIONS
AND ELECTRONICS
DIVISION

RSU
RESERVE SUPPORT
UNIT

RCO
REGIONAL
CONTRACTING OFFICE

SJA
STAFF JUDGE
ADVOCATE

**OFFICE OF
COUNSEL**

SAFETY

BPO
BUSINESS
PERFORMANCE
OFFICE

MCCS
MARINE CORPS
COMMUNITY
SERVICES

SEC BN
SECURITY BATTALION

HQ & SVC BN
HEADQUARTERS AND
SERVICE BATTALION

IG
INSPECTOR GENERAL



Active Duty Demographics

as of April 2013

- **194,223 end strength**
- **63% are 25 or younger**
 - 20% are under 21
- **39% are LCpl and below**
 - other services are between 20% and 24%
- **49% are married**
- **56% of the USMC has served less than 4 years**
- **1 Officer per 8 Enlisted**
 - lowest ratio of all services
- **99% of all Marines hold at least a high school degree or equivalent**
- **87% of Officers hold bachelor's degrees, master's degrees, or doctorates**



Reserve Forces Demographics

as of April 2013

- **97,412 Ready Reserve Marines**
 - 38% are Selected Reserves (SMCR, IMA, AR)
 - 58% are Individual Ready Reserves (IRR)
 - 4% are under reserve contract or initial training
- **Avg Age is 27**
- **33% are married**
- **1 Officer per 9 Enlisted in Selected Reserves**
- **99% of all Reserve Marines hold a high school degree or equivalent**
- **92% of Selected Reserve Officers hold bachelor's degrees, master's degrees, or doctorates**



RECAP

- **What are the three components of the Marine Corps?**
- **Where is HQMC located?**
- **How many Recruiting Regions are there?**

